



Scientific Advice Mechanism

to the European Commission

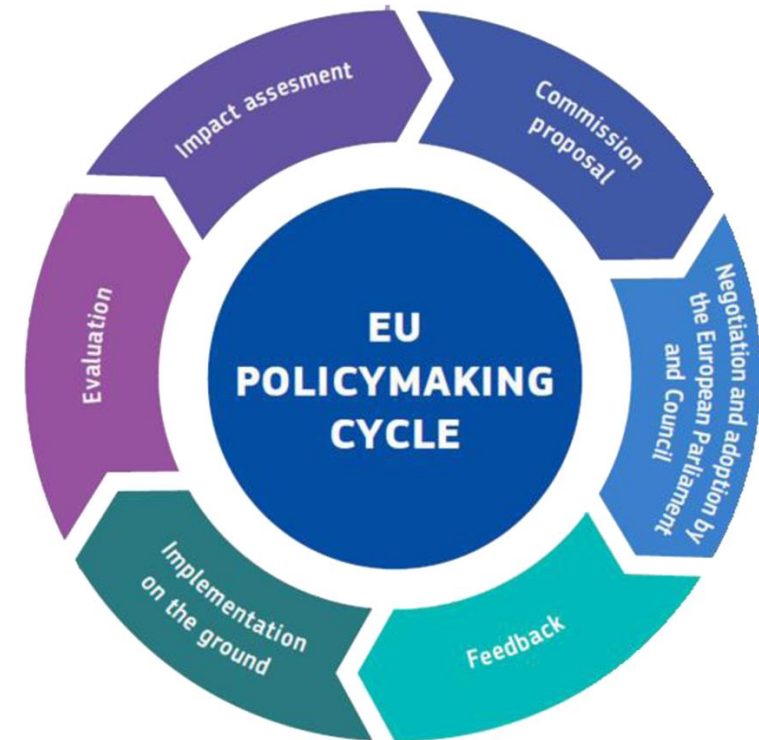
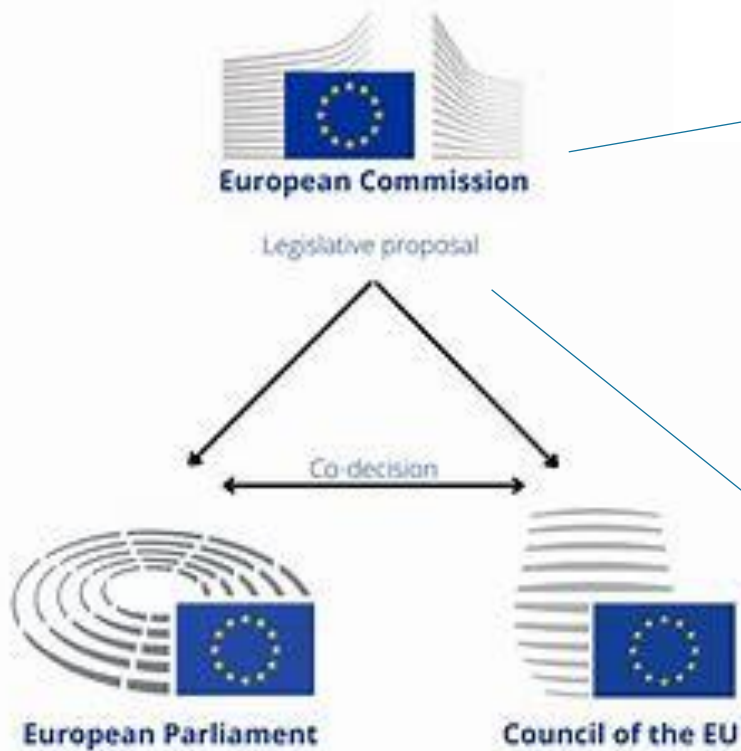
Karen Fabbri, SAM team, DG RTD, European Commission
Toby Wardman, SAPEA Communications
Louise Edwards, Academia Europaea Cardiff

Outline

- How European policymaking works
- Role of the Scientific Advice Mechanism (SAM)
- How the evidence review process works in the SAM
- SAM in action



EU Policy making

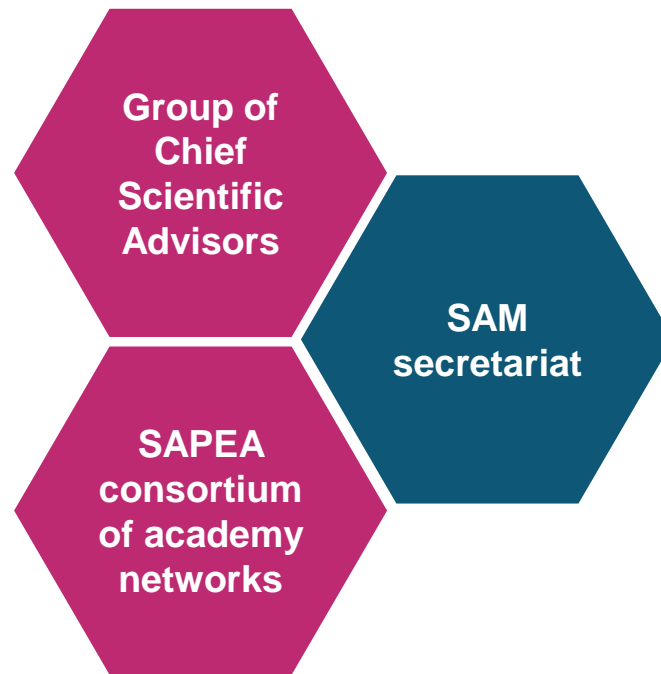


Who we are

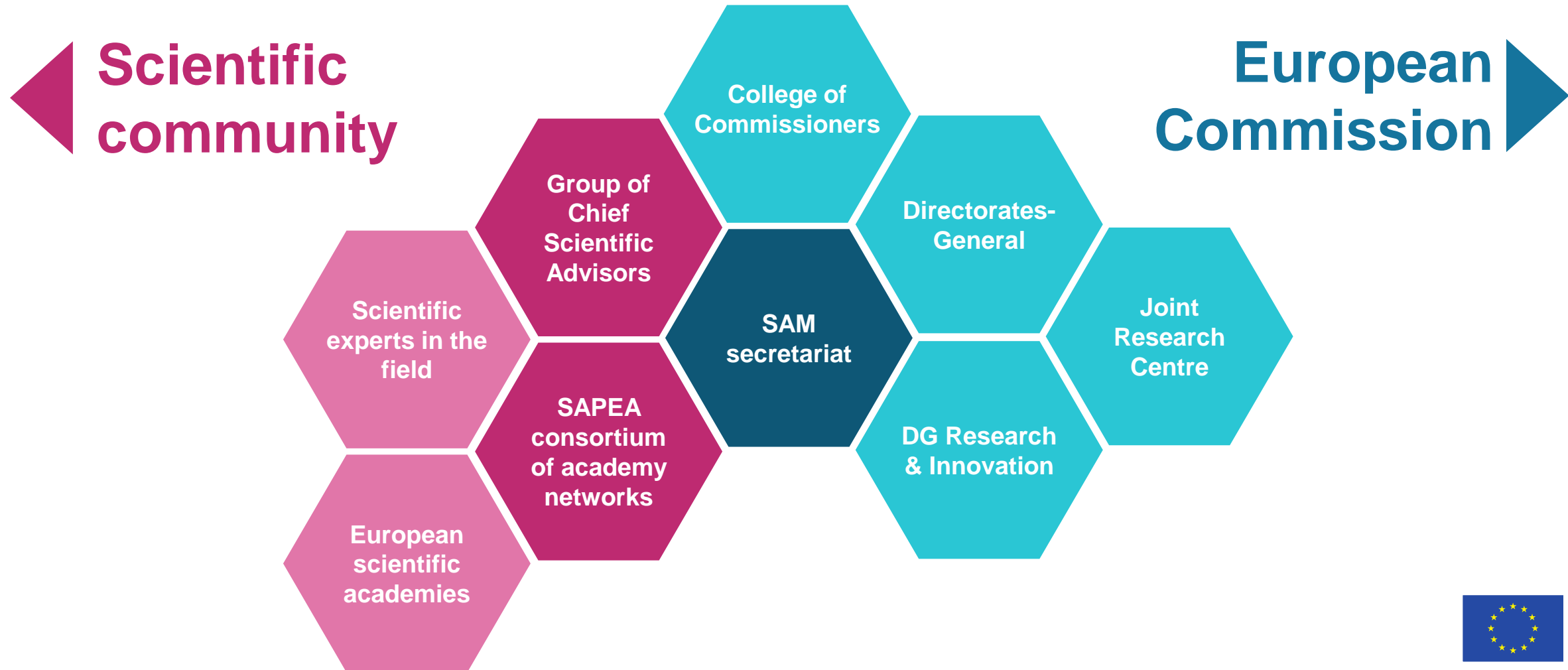
We provide independent scientific evidence and policy recommendations to the European institutions by request of the College of Commissioners.



The three parts of the SAM



Interfacing between science and policy



About the Advisors



- Nicole Grobert (chair)
- Nebojša Nakićenović (deputy chair)
- Naomi Ellemers
- Maarja Kruusmaa (to October 2024)
- Eric Lambin
- Alberto Melloni (to October 2024)
- Eva Zažímalová

About the Advisors



- **Seven highly qualified experts**
- Backgrounds in various disciplines, both social and natural sciences
- **Make policy recommendations** in response to requests for advice
- Recommendations based on publicly available scientific evidence

About the SAM secretariat



- **A small team within the European Commission**
- Acts as a liaison between the SAM and the Commission
- Coordinates scoping paper development
- Supports the Advisors with administration and record-keeping
- Works with SAPEA to communicate about the work of the SAM



How we work (simple version)

We receive a request

European Commissioners can ask us for advice on any topic

We review the evidence

A SAPEA working group writes an evidence review report

We make recommendations

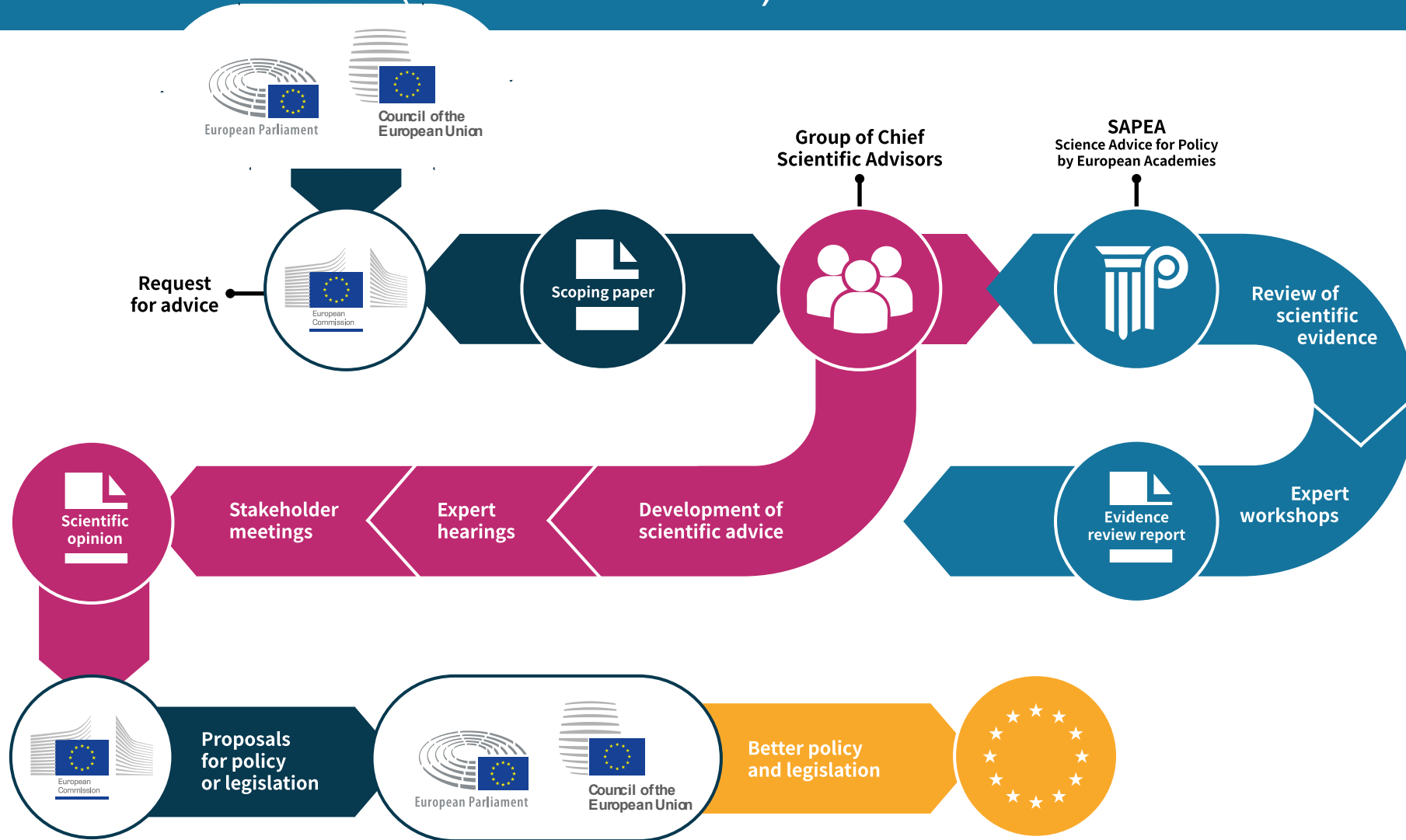
The Advisors write a Scientific Opinion based on the evidence

We deliver our advice

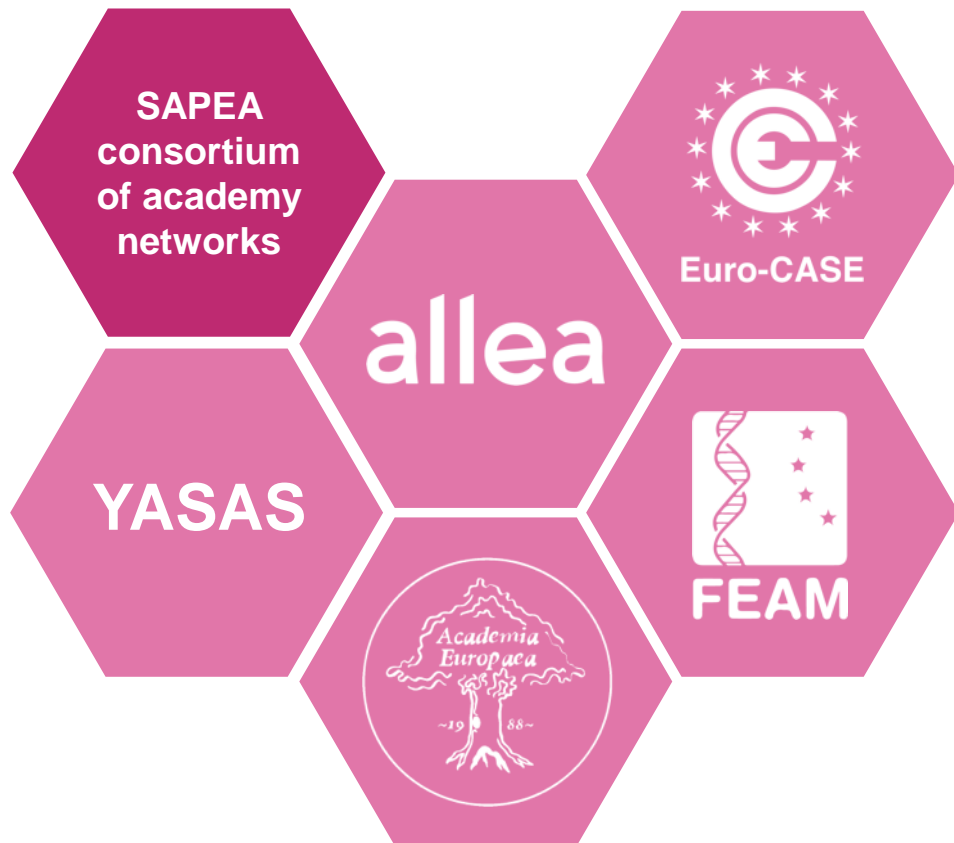
Our evidence and recommendations are both handed to the Commission



How we work (detailed version)



About SAPEA



- **Brings together around 110 academies from across Europe**
- Offers outstanding expertise from natural sciences, engineering and technology, medical, health, agricultural and social sciences, and the humanities
- **Provides independent evidence reviews on request**
- Informs the Advisors' policy recommendations



Diversity and inclusiveness

Within the Advisors

- Balance of qualities and experiences
- Gender balance
- Consideration given to next-generation leaders

Within SAPEA working groups

- Wide range of academic disciplines
- Focus on gender representation
- Focus on early- and mid-career researchers
- Geographical representation with focus on Widening countries
- About half of working group members are not academy fellows



Delivered advice

2017–2019

Glyphosate

Light duty vehicle
real-time CO2
emissions

Cybersecurity

New techniques in
agricultural
biotechnology

Food from the oceans

Carbon capture and
utilisation

Improving
authorisation
processes for plant
protection products in
Europe

Microplastics in nature
and society

Transforming the
future of ageing

Making sense of
science for policy

2020–2024

A sustainable food
system for the EU

Adaptation to climate
change-related health
effects

COVID-19, future
pandemics and other
crises in the global
context

Biodegradability of
plastics in the open
environment

A systemic approach
to the energy
transition in Europe

Improving cancer
screening in the EU

Strategic crisis
management in the
EU

Sustainable food
consumption

AI in science



Engagement activities

Community-building:

- Major annual conference series for science-for-policy community
- Developing science-for-policy capacity among Europe's academies

Communications and outreach:

- Hundreds of public events
- Popular podcast on issues in science advice

Scholarship:

- Principles on scientific advice for policy and society



SAM in action (1) Food from the Oceans

- Requested by Commissioner Vella – Environment, Maritime Affairs and Fisheries, 2014-2019
- Delivered in 2017
- Scoping question
 - *"How can more food and biomass be obtained from the oceans in a way that does not deprive future generations of their benefits?"*



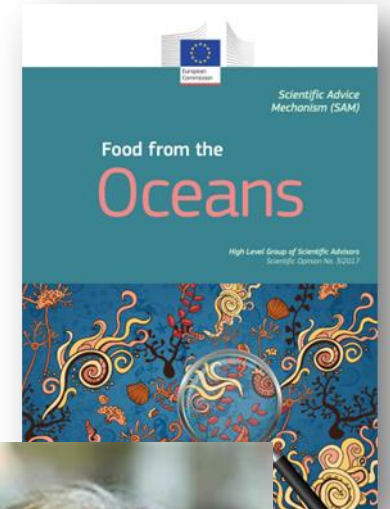
Evidence review report

- Working group of 18 experts from across different disciplines and fields
- Covered both natural sciences and humanities/social sciences

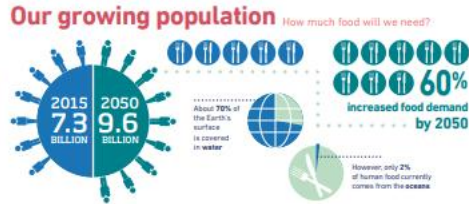


Scientific Opinion

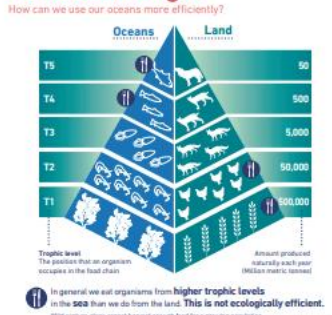
- High-level recommendations
 - Mainstream into **systems-level** and **global policy** agendas
 - Vibrant **mariculture sector**
 - Sustain **wild-capture**
 - Facilitate **policy change**, future-proof policy and extend knowledge



Outreach



Food for thought



Changing tides

- What have experts advised the European Commission to do?
1. Make room for mariculture with marine spatial planning
 2. Improve communication between stakeholders and consumers
 3. Use research to fill the gaps in our knowledge
 4. Prioritise "food from the oceans"
 5. Strengthen regulations to sustain wild capture
- Visit www.sapea.info/oceans to find out more

Eat SMART

- How can you make a difference?
- By choosing to eat **different types of seafood** you can influence demand
 - Microalgae such as spirulina are rich in **protein**
 - Mussels are a good source of **iron**
 - Kelp contains **iodine** that can help treat thyroid problems
 - Seaweed can boost your **protein** intake
 - Nori seaweed, common in Japanese sushi, is high in **vitamin C**
 - Oysters can add more **zinc** to your diet
 - Seaweed can boost your **protein** intake

SAPEA European Commission's Group of Chief Scientific Advisors

Use #FoodFromTheOceans to let us know what you think about eating more food from the ocean



The European Commission works to guarantee that the best policy will support every citizen in their daily life. The Commission makes decisions about our oceans and our food supply based on advice from leading experts across Europe. Using expertise and evidence on the oceans, nutrition, the environment, psychology, spatial planning and regulations, the Group of Chief Scientific Advisors has made important recommendations to the European Commission.

You can learn more about the Scientific Advice Mechanism and the work done by the Group of Chief Scientific Advisors and the European Academies at www.sapea.info/iam

Find out more about the recent expert reports that investigate the issue of food from the oceans at: www.sapea.info/oceans

SAPEA is engaged in partnerships with various stakeholders and Designated NGOs.

SAPEA is part of the European Commission's Scientific Advice Mechanism and has received funding from the European Union's Horizon 2020 research and innovation programme under grant agreement No 727210. This notice reflects only the authors' views. The European Commission is not responsible for any use that may be made of the information it contains.



About 70% of the Earth's surface is covered in **water**

However, only 2% of human food currently comes from the **oceans**

In general we eat organisms from **further up the food chain** in the sea than we do from the land. This is not ecologically efficient

By choosing to eat **different types of seafood** you can influence demand

Mussels are a good source of **iron**

Seaweed can boost your **protein** intake

Jellyfish contains **protein**

Kelp contains **iodine** that can help treat thyroid problems

Oysters can add more **zinc** to your diet

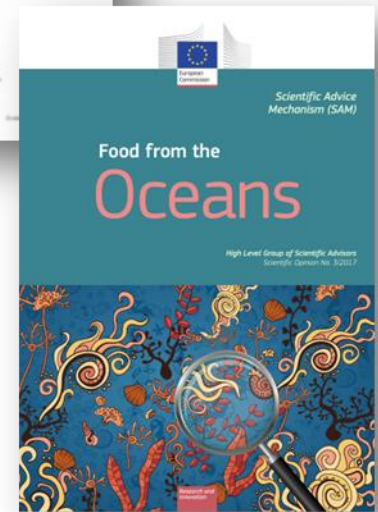
Oysters can boost your **protein** intake

Use #FoodFromTheOceans to let us know what you think about



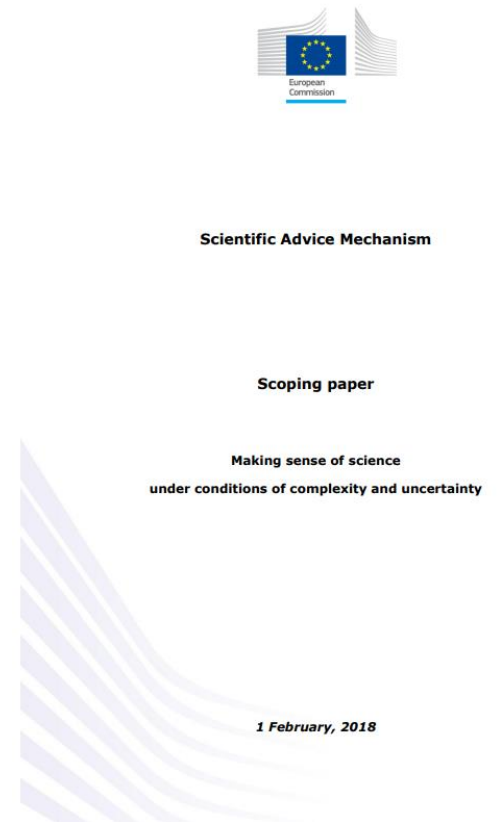
Impact (up to 2023)

- Academic impact
 - 78 citations
- EU legislative and related impact
 - 15 citations in legislative and associated documents
 - EU Communication on algae sector
 - Implementation of Common Fisheries policy
- Wider policy impact
 - Government of Ireland. (2023). *A strategic review of Irish microalgae cultivation*
 - FAO. (2022). *The role of genetic resources for food and agriculture in adaptation to and mitigation of climate change*



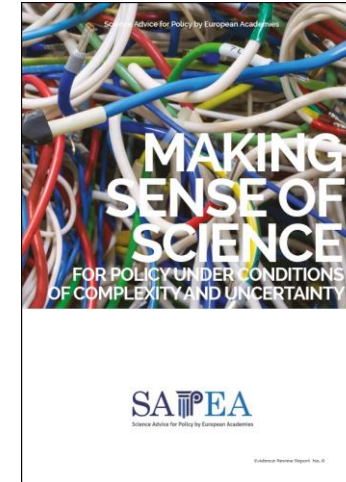
SAM in action (2) Making sense of science

- Delivered in 2019
- Scoping question
 - *How to provide good science advice to EC policymakers, based on available evidence, under conditions of scientific complexity and uncertainty?*



Evidence review report

- 16 experts from across disciplines and fields
- Examined science as source of policy advice, using it in policymaking and improving science advice



Scientific opinion

- High-level recommendations
 - Engage early and often, establish boundaries and scope
 - Use the full scope of good science
 - Ensure rigorous synthesis
 - Codify good science advice
 - Analyse, assess and communicate uncertainties
 - Explain the path from evidence to advice



Outreach



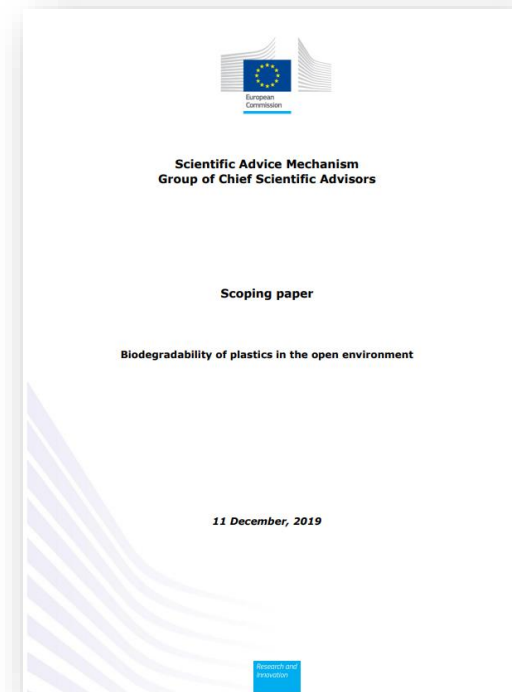
Impact (up to 2023)

- Academic impact
 - 81 citations
- EU policy impact
 - European Commission, Joint Research Centre, (2022). Science for policy in Portugal.
- Wider policy impact
 - International Science Council. (2023). *Unprecedented and unfinished*. Second edition.
 - EFSA. (2022). *Degree of certainty in scientific advice: implications for risk management and communication*.
 - International Development Research Centre. (2023). *Réinventer le dialogue entre sciences, politiques et grand public : points de vue. Reinventing the dialogue between science, politics and the general public: points of view*.



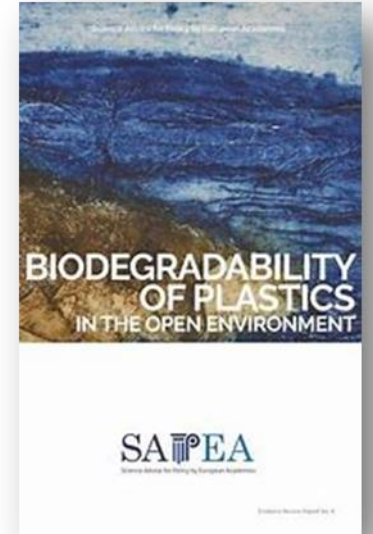
SAM in action (3) Biodegradability of Plastics

- Requested by Commissioner Vella – Environment, Maritime Affairs and Fisheries, 2014-2019
- Delivered in 2020
- Scoping questions
 - *...What are the criteria and corresponding applications of such plastics that are beneficial to the environment, compared with non-biodegradable plastics?"*



Evidence review report

- Expert group of 11 across different disciplines and fields
- Looked at process of how plastic degrades, possible applications, testing and standards, ecological risk, social and policy aspects



Scientific Opinion

- High-level recommendations
 - Define biodegradability as a **system property** which takes into account material properties and specific environmental conditions
 - Limit to **specific applications** for which reduction, reuse, and recycling are not feasible
 - Support **testing and certification standards**
 - Promote the supply of **clear and accurate information**



Outreach



Impact (up to 2023)

- Academic impact
 - 72 citations
- EU legislative and related impact
 - 7 citations in legislative and associated documents
 - EU Communication setting out an EU-wide policy framework focusing on biobased, biodegradable and compostable plastics
- Wider policy impact
 - United Nations Environment Programme. (2023). *Turning off the tap. How the world can end plastic pollution and create a circular economy.*
 - European Commission, Directorate-General for Environment. (2022). *Biobased plastic – Sustainable sourcing and content – Final report.*



Forthcoming advice

2024

**Solar
radiation
modification**

A graphic for 'Solar radiation modification' featuring a blue background with a pattern of white-outlined hexagons. A bright sunburst effect is visible in the lower right corner of the hexagonal pattern.

2024

**One Health
governance**

A graphic for 'One Health governance' featuring an orange background with a pattern of white-outlined hexagons. A globe with a blue and white grid is visible in the lower right corner, partially overlapping the hexagonal pattern.

More information

Scientific Advice Mechanism
to the European Commission

ABOUT US HOW WE WORK OUR ADVICE NEWS & EVENTS PODCAST

SAPEA is recruiting for a coordinator and for a Scientific Policy Officer. [Read more and apply](#)

April 2024

AI in science

Artificial intelligence has the potential to revolutionise scientific discovery, accelerate research progress, boost innovation and improve researchers' productivity. The EU must take hold of the opportunities this brings, and in a timely way. But it must also respond to the challenges and risks associated with this fast-evolving technology.

[Read more](#) [See all advice](#)

20 August 2024

Open call to nominate scientists for membership of the Group of Chief Scientific Advisors to the European Commission

The members of the GCSA are appointed by the Commissioner responsible for research and innovation from a short-list established by an independent, high-level Identification Committee.

12 June to 13 June 2025

Philosophy of science advice workshop

In-person event

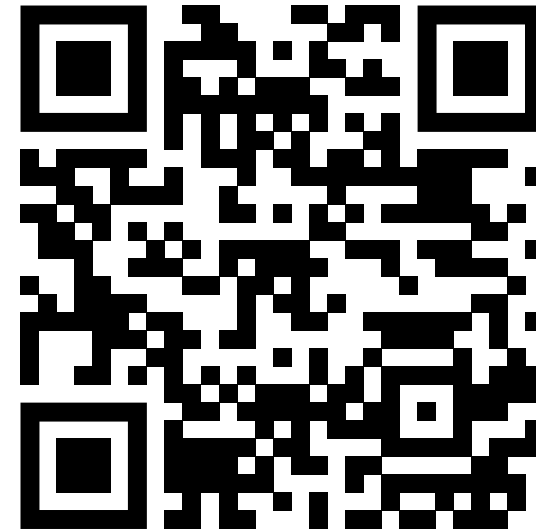
The Finnish Academy of Science and Letters, together with the Scientific Advice Mechanism to the European Commission, will host an informal working meeting of scholars and practitioners working on the philosophy of science advice.

26 May to 27 May 2025

Building bridges: shaping Europe's science-for-policy landscape

In-person event with streaming

The Scientific Advice Mechanism will organise a major conference for the science-for-policy community in Vienna in May 2025.



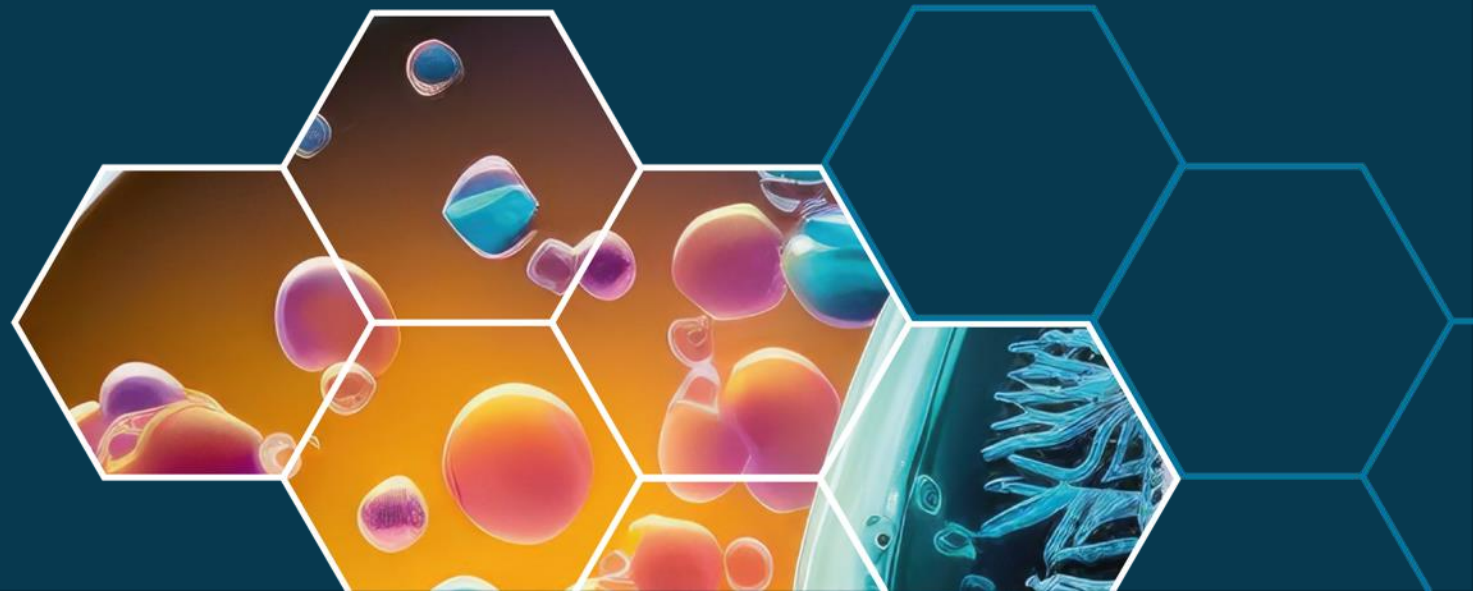
scientificadvice.eu
[@EUScienceAdvice](https://twitter.com/EUScienceAdvice)



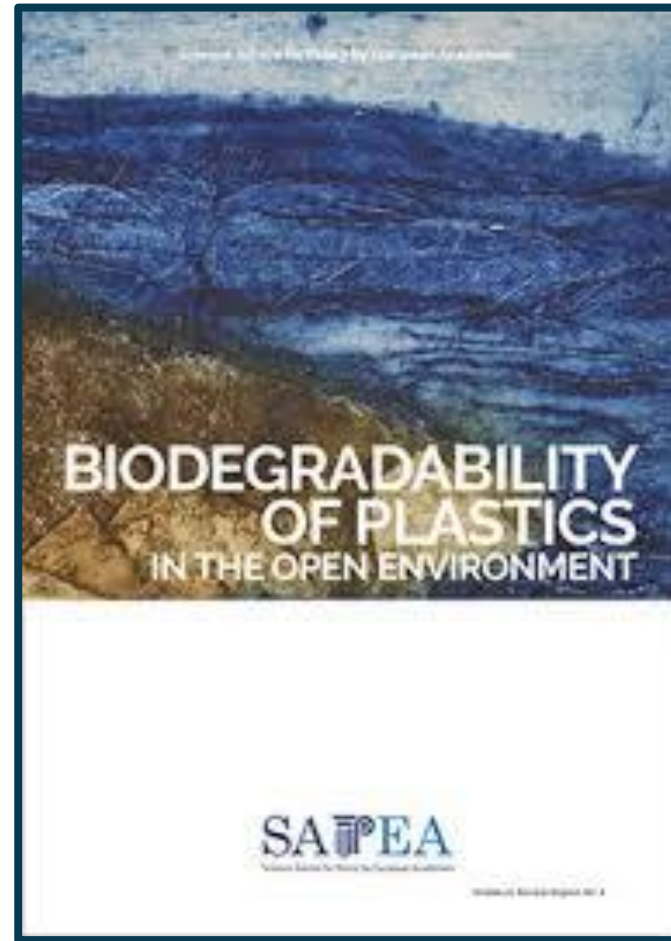
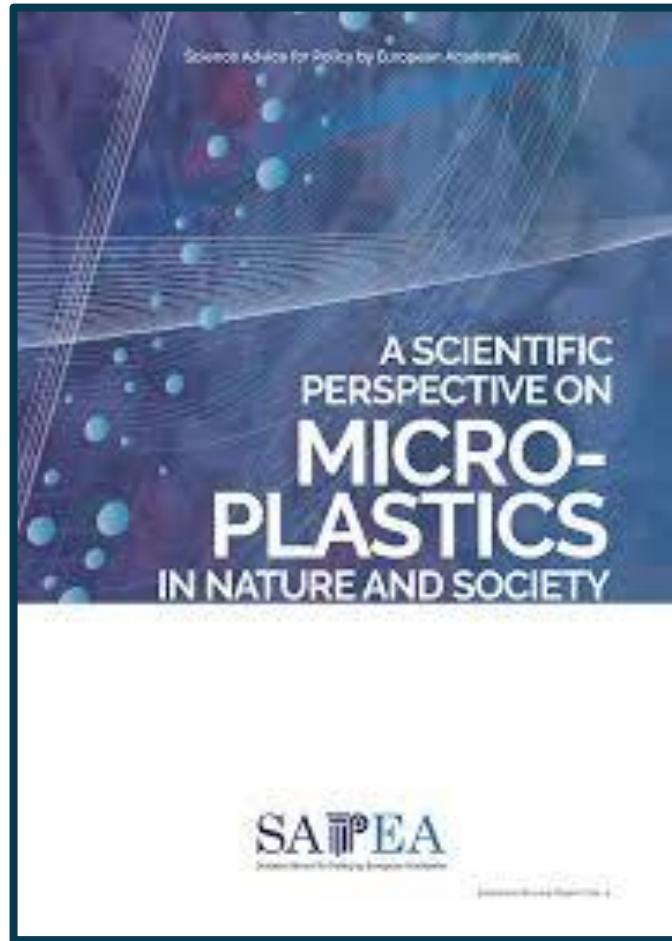
Scientific Advice Mechanism
to the European Commission



Richard Thompson
University of Plymouth, UK

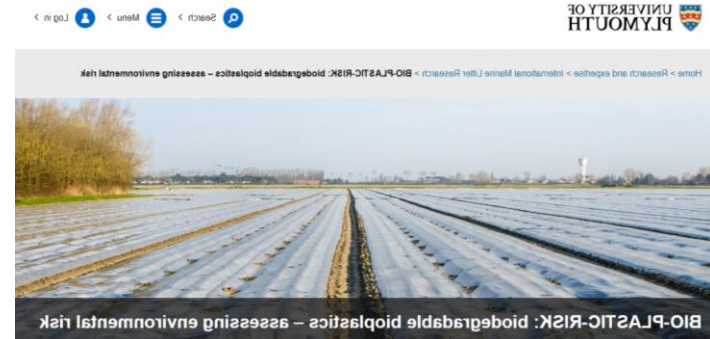


Evidence reviews



Participation, opportunities, outcomes

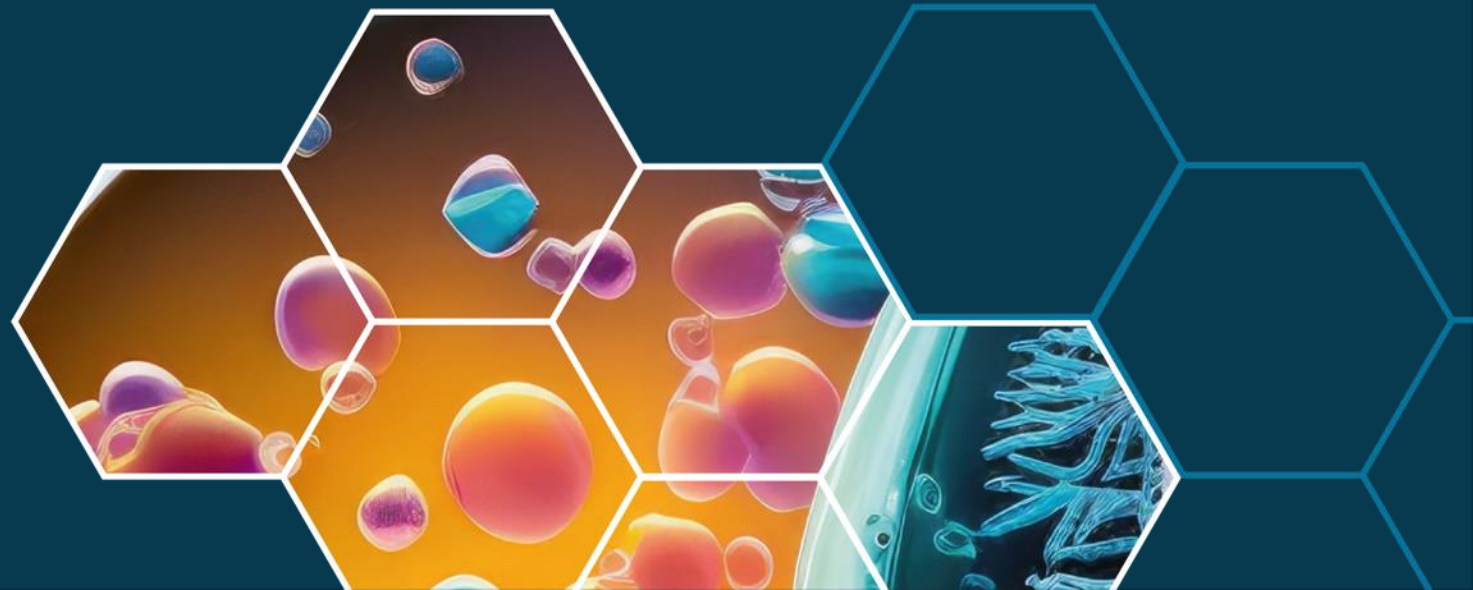
- Promote scientific evidence arising from your area of expertise for policy audiences
- Opportunities for early career to senior researchers
- Rich dialogue with key researchers in your field, including those from different disciplines
- Opportunities to present this research at high profile events
- Facilitates funding success





My experience as member of the GSCA

Pearl Dykstra



Crucial role for the social sciences

They bring a unique perspective: focus on institutions, cultural context, power dynamics, values, social networks, etcetera

Illustration: **cybersecurity** recommendations

- Power dynamics → control over own data
- Power dynamics → contextual identity
- Values → duty of care (producers)
- Values → transparency about data breaches

Typical approach to cybersecurity: emphasis on technological measures (police, military)

SAM approach is different: citizens and quality of products



The advice is being used. Why effective?

- Demonstrate impartiality (declare interests)
- Work in a consultative way (touch base with policy makers)
- Rely on the best available evidence (thus, speak with authority)
- Tailor recommendations to relevant legislation (greater likelihood put in practice)

